

石墨烯铜

PHYSICAL PERFORMANCE TABLE

牌 号	Brand
-----	-------

石墨烯铜

应用范围	Range Of Application
------	----------------------

高速线缆	非常适合
驱动电机电磁扁线	非常适合
键合线	适合
音频线	适合

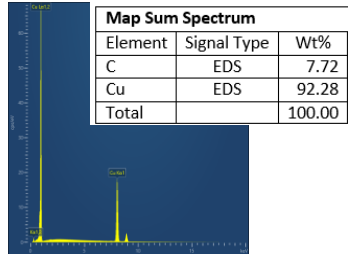
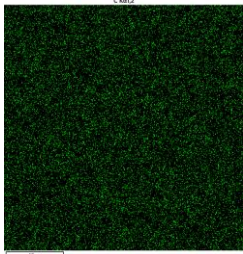
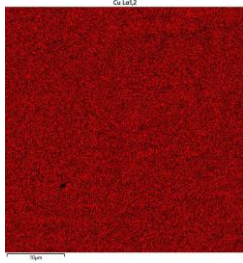
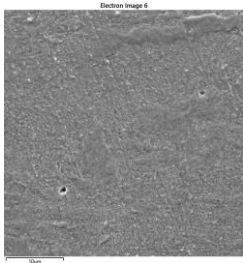
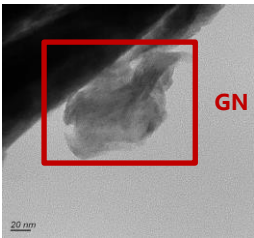
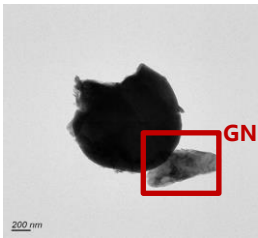
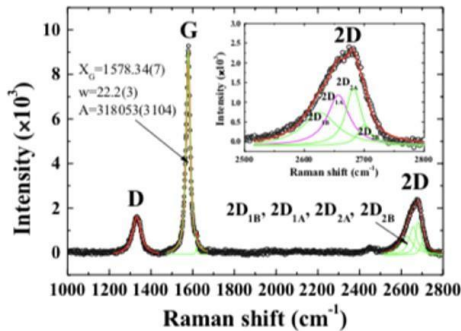
材料特性	Material Characteristics
------	--------------------------

低温电阻系数
高导电率
高导热率
耐高压、低漏电
低膨胀系数

机械性能	Mechanical Properties
------	-----------------------

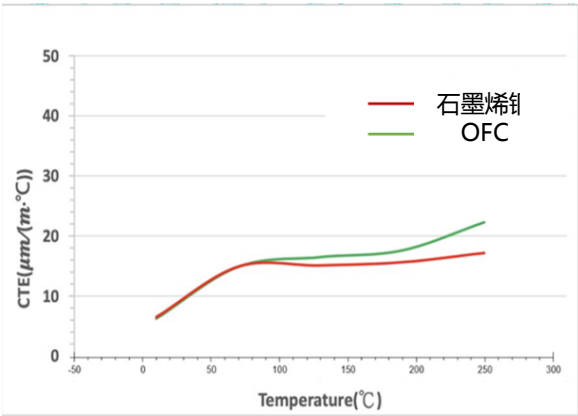
材质	状态	抗拉强度/ MPa	导电率/ IACS%	导热率/ W/m·K
OFC（无氧铜）	O60	220	100~101	390
石墨烯铜	O60	240	101~102	430

石墨烯铜材料表征	Material Characterization of HCC
----------	----------------------------------

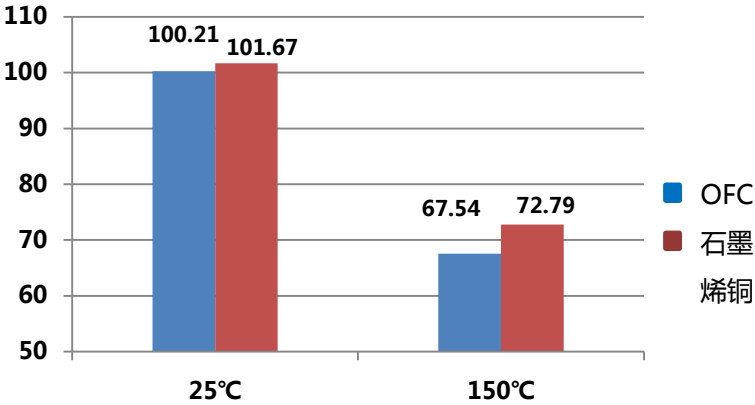


石墨烯铜 vs OFC

Performance Comparison Between HCC and OFC



热膨胀系数对比图



高温导电率对比图